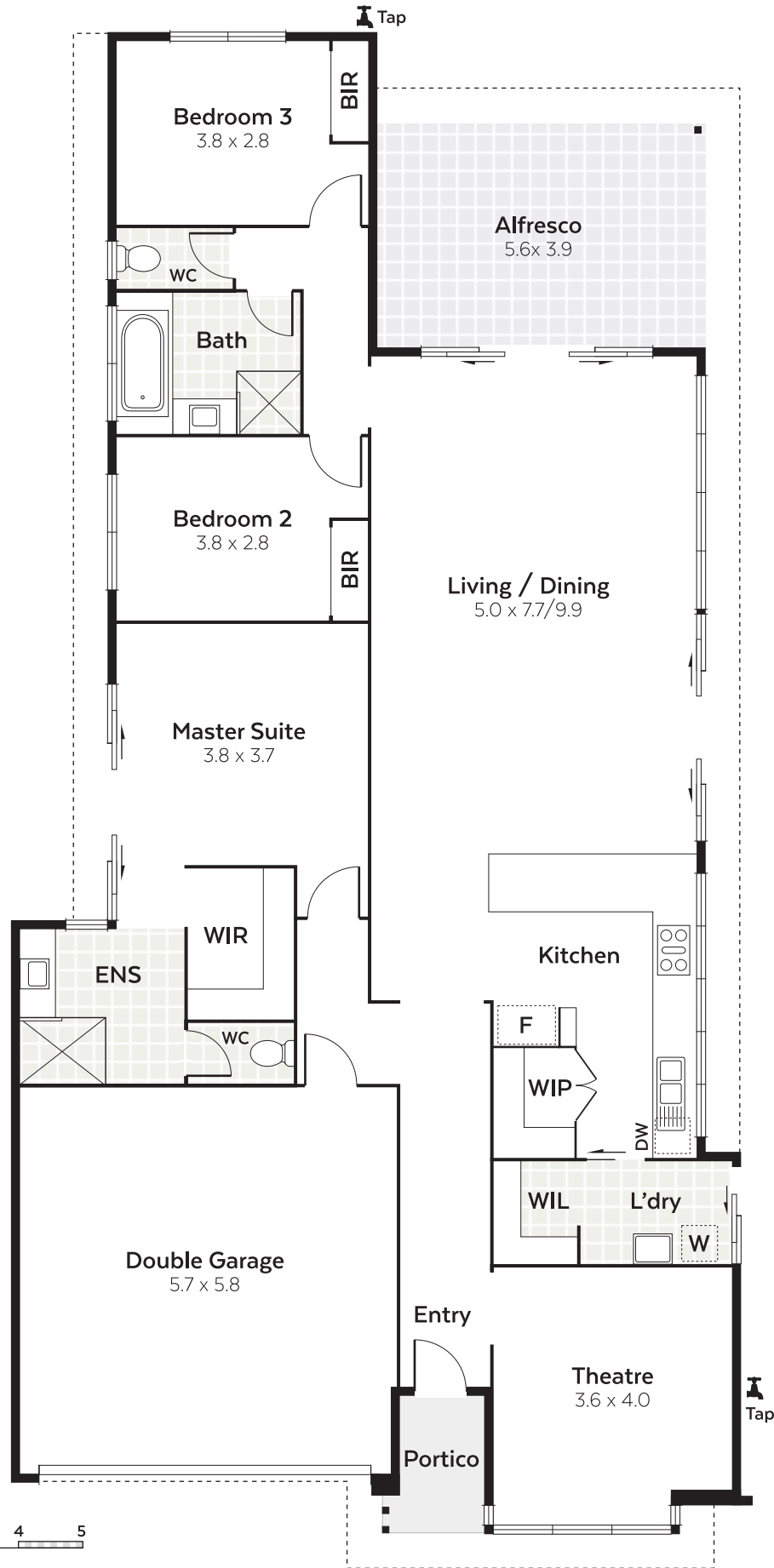


Approximate Areas:

Internal Area	167.9m <sup>2</sup>
Portico	3.9m <sup>2</sup>
Garage	36.8m <sup>2</sup>
Alfresco	17.9m <sup>2</sup>
TOTAL	226.5m <sup>2</sup>



## 45 Painted Parkway ALKIMOS

NORTH

